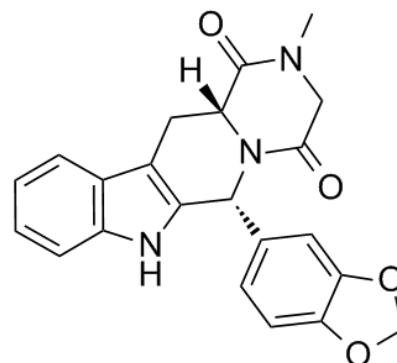


Product Name : Tadalafil
Cat. No. : PC-46014
CAS No. : 171596-29-5
Molecular Formula : C₂₂H₁₉N₃O₄
Molecular Weight : 389.404
Target : Phosphodiesterase (PDE)
Solubility : DMSO: ≥ 52 mg/mL



Biological Activity

Tadalafil (IC-351, IC351) is a potent, selective phosphodiesterase-5 (PDE5) inhibitor (IC₅₀=1 nM). Tadalafil shows no inhibition on most of the other families of PDEs, with the exception of PDE11.

References

- Blount MA, et al. *Mol Pharmacol*, 2004, 66(1), 144-152.
Ring BJ, et al. *Clin Pharmacol Ther*, 2005, 77(1), 63-75.

Caution: Product has not been fully validated for medical applications. Lab Use Only!

E-mail: tech@probechem.com